

16mm Snap-in Insulated Shaft Potentiometers

PS166H

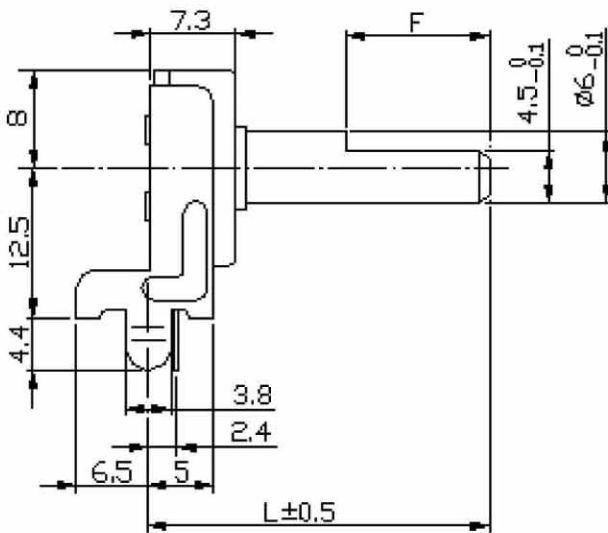


Part Number

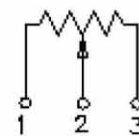
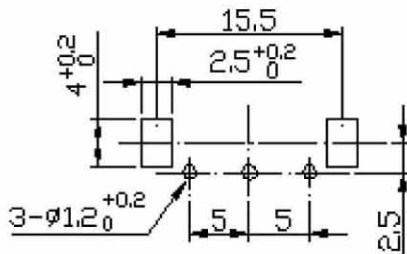
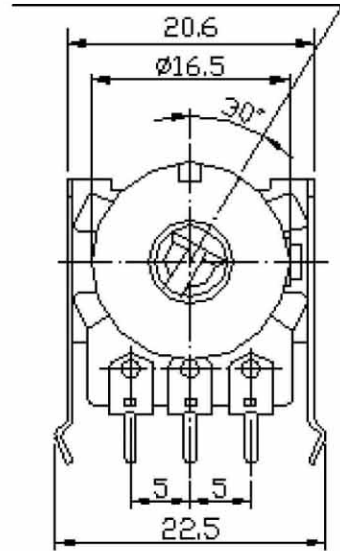
PS166H - **B** **50K**, L - **20** **F**

↓ Taper ↓ Resistance Value ↓ Shaft Length ↓ Shaft Type

Dimensions



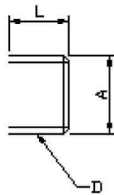
FULL C.C.W. POSITION



16mm Snap-in Insulated Shaft Potentiometers

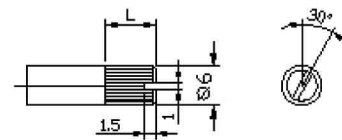
Shaft Dimensions

Bushing Dimension



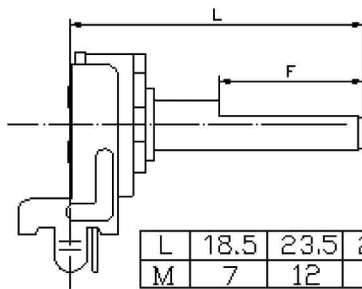
L	A	D	
7	ø9	M9x0.75	STD

KC TYPE
18TEETH



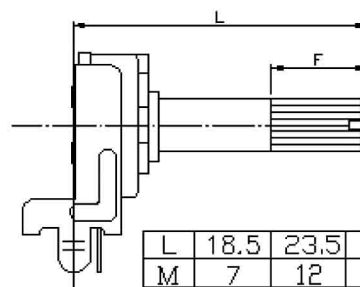
SHAFT SHOWN IN
FULL C.C.W. POSITION

Horizontal



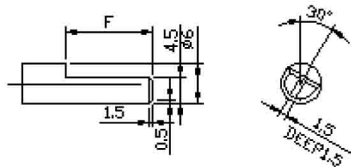
L	18.5	23.5	28.5	33.5
M	7	12	12	12

Horizontal



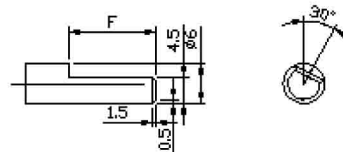
L	18.5	23.5	28.5	33.5
M	7	12	12	12

F Type



SHAFT SHOWN IN
FULL C.C.W. POSITION

F Type



SHAFT SHOWN IN
FULL C.C.W. POSITION