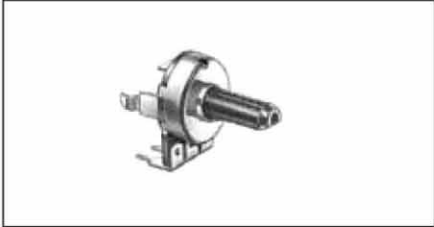


16mm Snap-in Insulated Shaft Potentiometers

PS165V

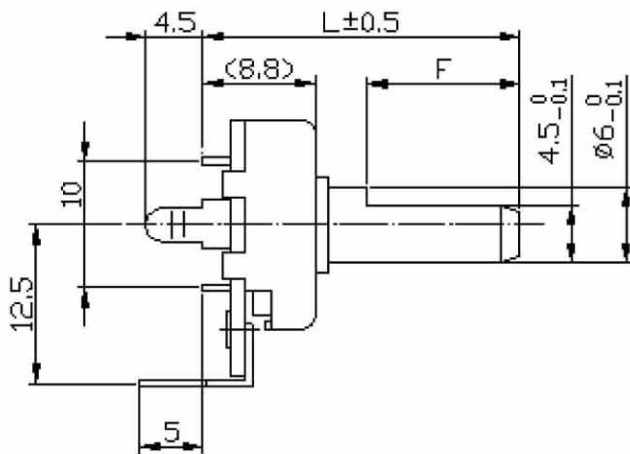


Part Number

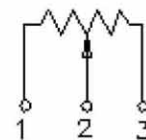
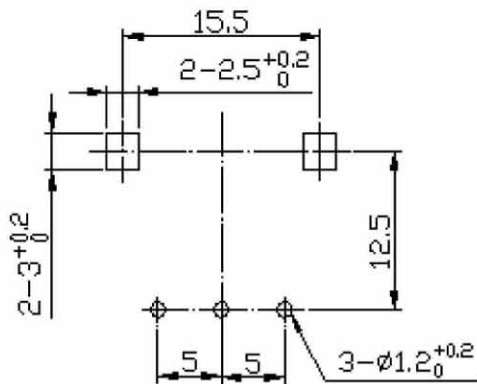
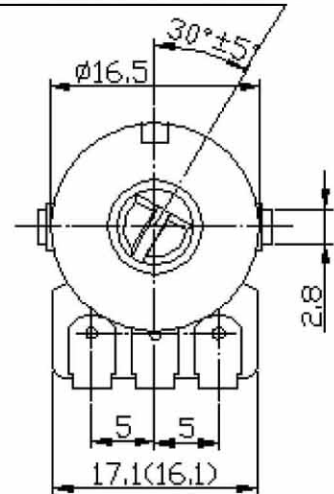
PS165V - **B** **50K**, L - **20** **F**

↓ Taper ↓ Resistance Value ↓ Shaft Length ↓ Shaft Type

Dimensions



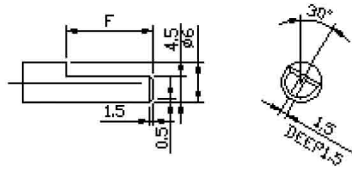
FULL C.C.W POSITION



16mm Snap-in Insulated Shaft Potentiometers

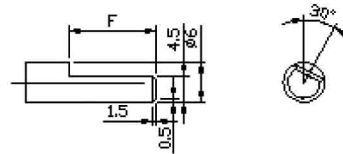
Shaft Dimensions

F Type



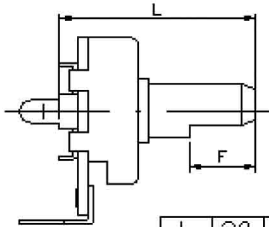
SHAFT SHOWN IN FULL C.C.W. POSITION

F Type



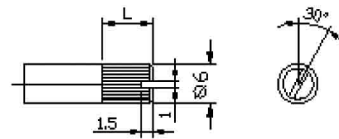
SHAFT SHOWN IN FULL C.C.W. POSITION

Vertical



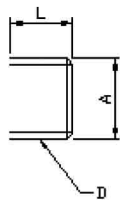
L	20	25	30
F	12	12	12

KC TYPE
18TEETH



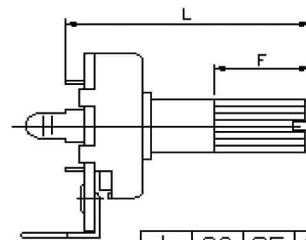
SHAFT SHOWN IN FULL C.C.W. POSITION

Bushing Dimension



L	A	D	
7	∅9	M9x0.75	STD

Vertical



L	20	25	30
F	7	12	12