

16mm Snap-in Insulated Shaft Potentiometers

**PS163B**

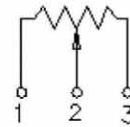
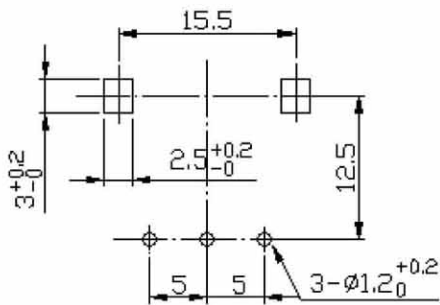
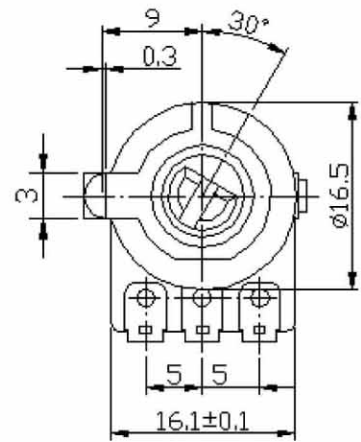
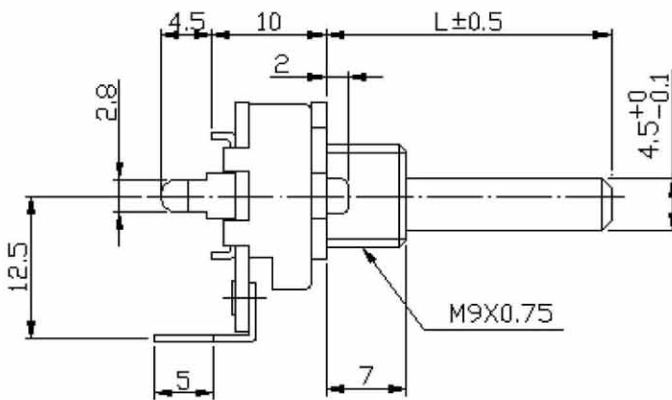


**Part Number**

PS163B - **B** **50K**, L - **20** **F**

↓ Taper    ↓ Resistance Value    ↓ Shaft Length    ↓ Shaft Type

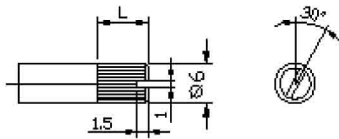
Dimensions



**16mm Snap-in Insulated Shaft Potentiometers**

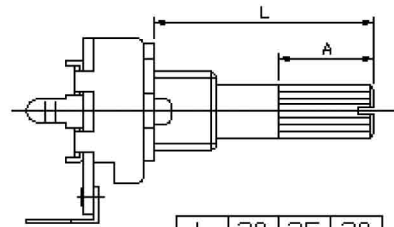
Shaft Dimensions

KC TYPE  
18TEETH



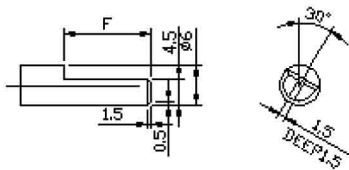
SHAFT SHOWN IN  
FULL C.C.W. POSITION

Vertical with bushing



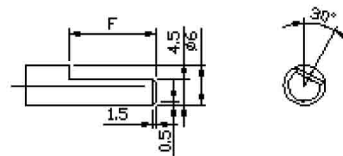
L	20	25	30
A	12	12	12

F Type



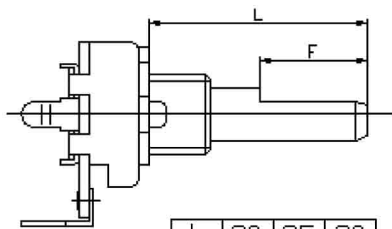
SHAFT SHOWN IN  
FULL C.C.W. POSITION

F Type



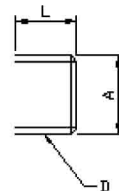
SHAFT SHOWN IN  
FULL C.C.W. POSITION

Vertical with bushing



L	20	25	30
F	12	12	12

Bushing Dimension



L	A	D	
7	∅9	M9x0.75	STD