

16mm Snap-in Insulated Shaft Potentiometers

PS161H

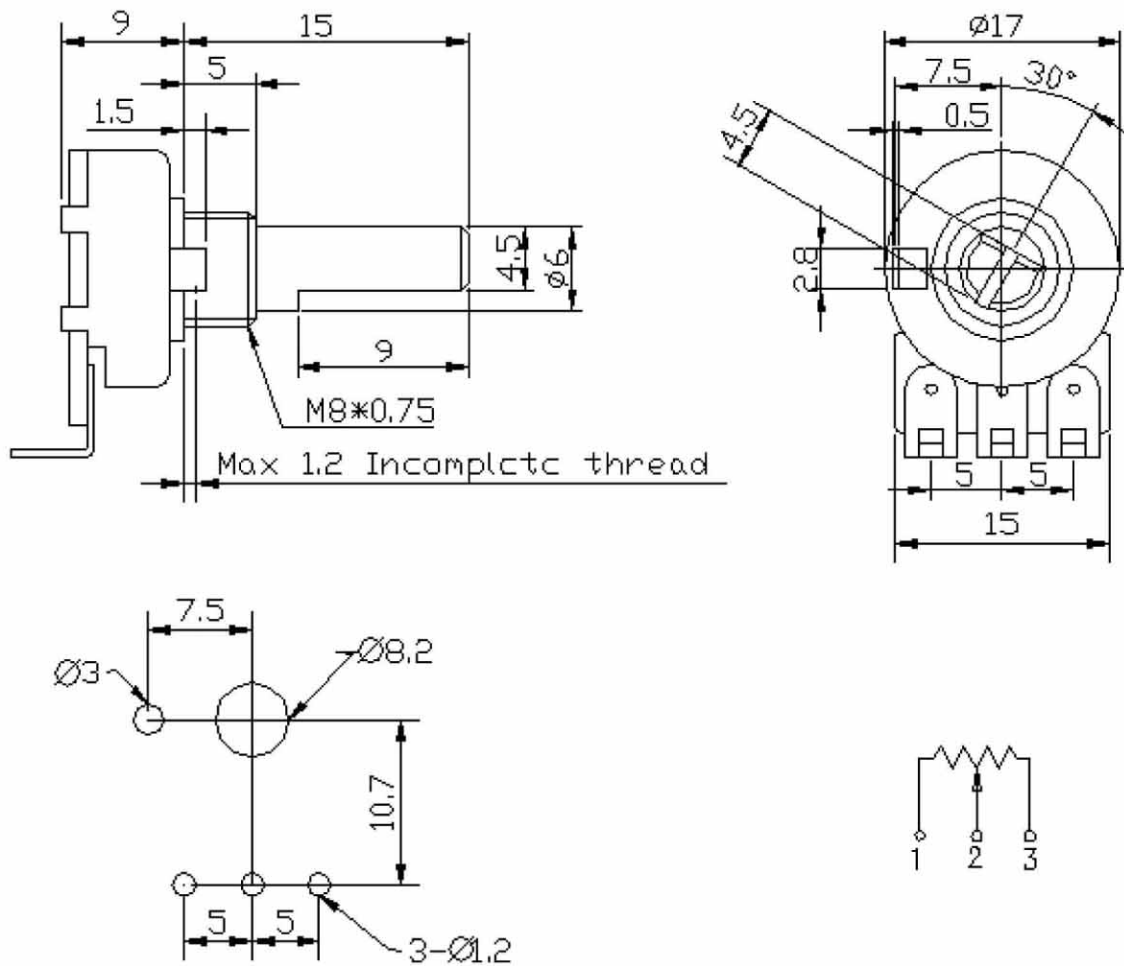


Part Number

PS161H - **B** **50K**, L - **20** **F**

↓ Taper    ↓ Resistance Value    ↓ Shaft Length    ↓ Shaft Type

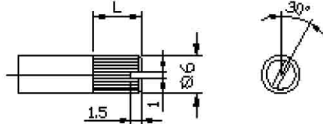
Dimensions



**16mm Snap-in Insulated Shaft Potentiometers**

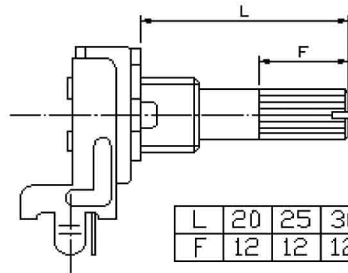
Shaft Dimensions

KC TYPE  
18TEETH

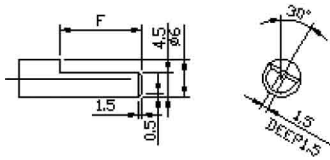


SHAFT SHOWN IN  
FULL C.C.W. POSITION

HORIZONTAL WITH BUSHING

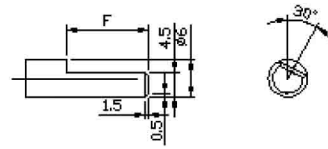


F Type



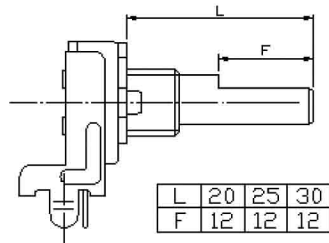
SHAFT SHOWN IN  
FULL C.C.W. POSITION

F Type

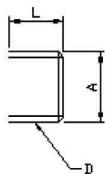


SHAFT SHOWN IN  
FULL C.C.W. POSITION

Horizontal with bushing

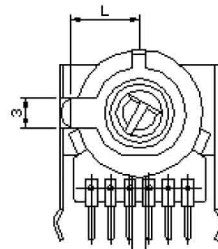


Bushing Dimension



L	A	D	
7	ø9	M9x0.75	STD

Stopper Dimension



L	
9	SATNDARD