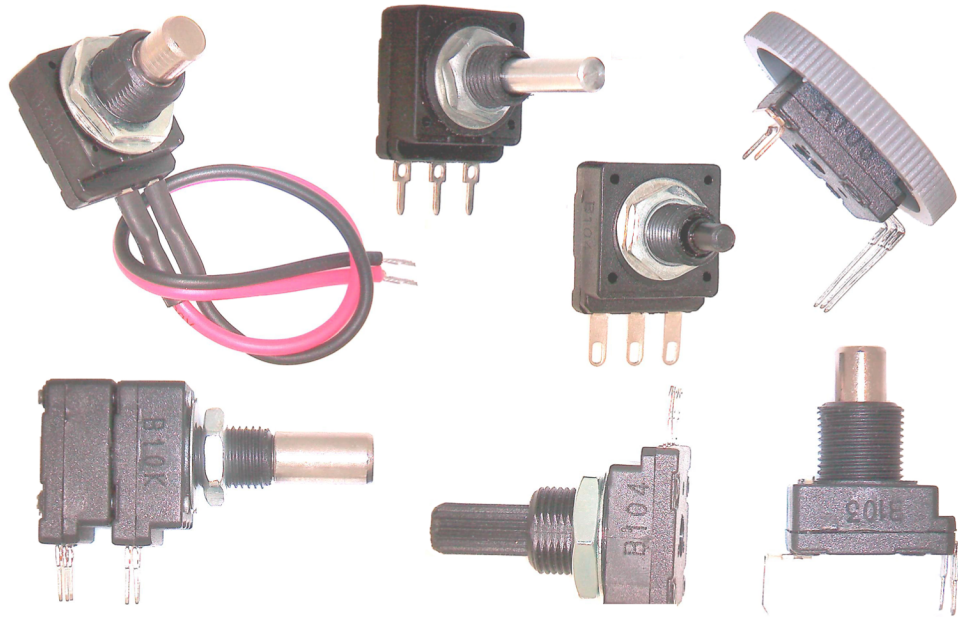


# CA16ST series Carbon Potentiometer

- Fully insulated to pass Hi-Pot testing
- Dust-Proof construction
- Special Available:
  - Tolerances
  - Resistance values
  - Tapers (Curves)



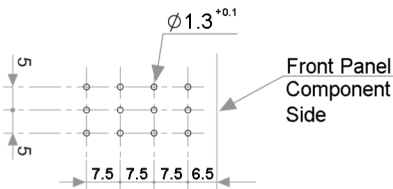
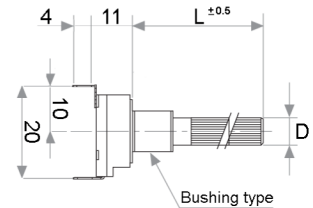
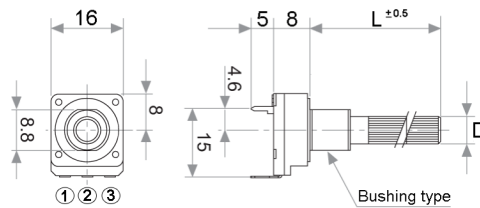
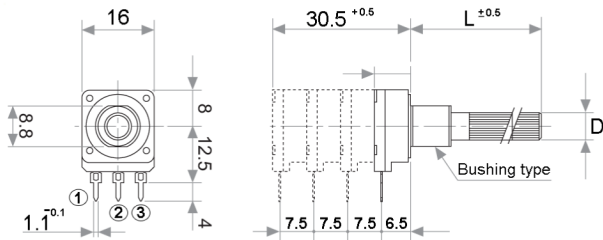
## Models

CA16ST-SH - SINGLE  
CA16ST-DH - DUAL

CA16ST-TH - TRIPLE  
CA16ST-CH - QUAD

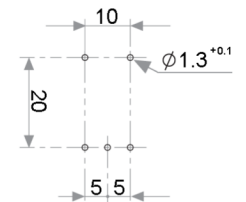
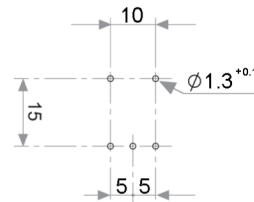
CA16ST-SV

CA16ST-SVE



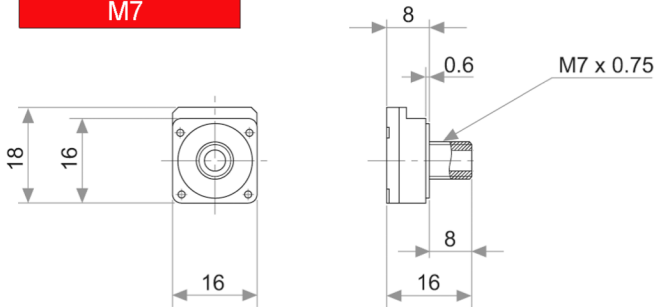
Terminal Designation (CCW)

- ① Initial
- ② Wiper
- ③ Final

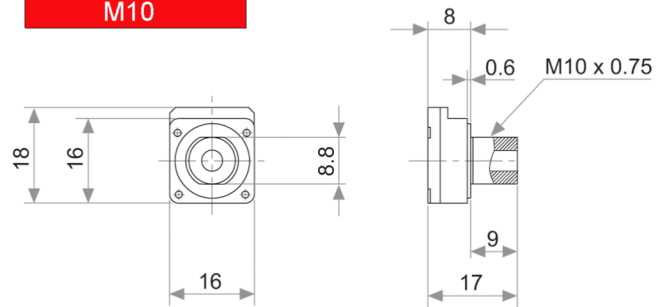


## BUSHING

M7

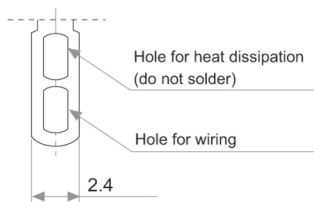


M10

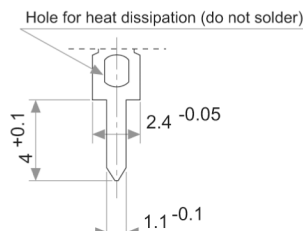


## TERMINALS

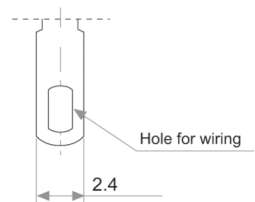
C



I

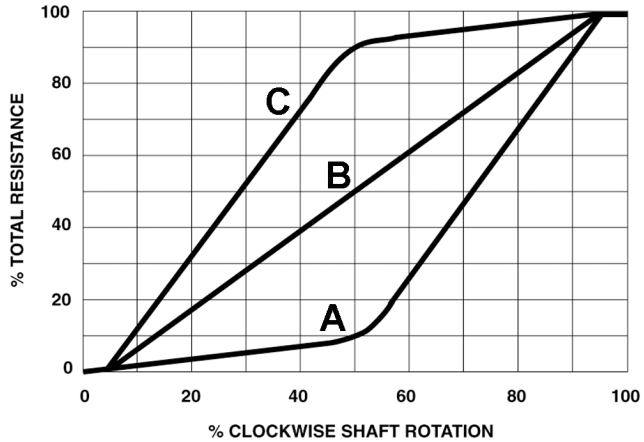


CS



## TAPERS

A = LOG (Audio)  
 B = LINEAR  
 C = Anti-LOG



## RESISTANCE RANGE

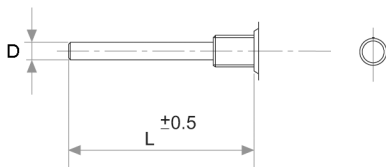
≤ 100 OHMS ~ ≤ 5 MEG OHMS ( E3 series + )  
 ( Special resistance values available upon request. Please consult our office for details )

## TOLERANCE

100 OHMS ~ ≤ 1 MEG OHMS ----- ± 20%  
 > 1 MEG OHMS ~ ≤ 5 MEG OHMS ----- ± 30%  
 ( Special tolerances available upon request. Please consult our office for details )

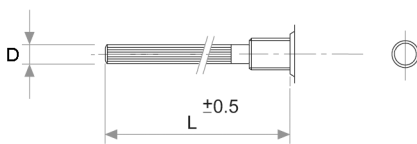
## SHAFT STYLES

### R Type Round (smooth)



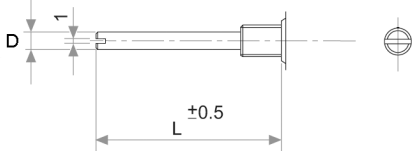
MATERIAL	DIAMETER ( D )	CODE
METAL	4 mm	M4
METAL	6 mm	M6
METAL	6.35 mm	M635

### RK Type Round (knurled)



MATERIAL	DIAMETER ( D )	CODE
PLASTIC	3.1 mm	P31
PLASTIC	4 mm	P4
PLASTIC	6 mm	P6
PLASTIC	6.35 mm	P635

### RE Type Round - Slotted (smooth) \*

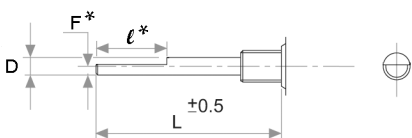


MATERIAL	DIAMETER ( D )	CODE
METAL	4 mm	M4
METAL	6 mm	M6
METAL	6.35 mm	M635

MATERIAL	DIAMETER ( D )	CODE
PLASTIC	6.35 mm	P635

\* P635 shaft is KNURLED (40 teeth)

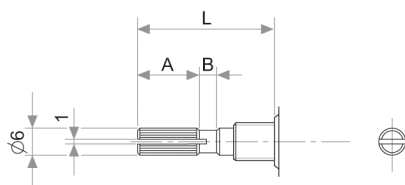
### F Type Flatted



MATERIAL	DIAMETER ( D )	CODE
METAL	4 mm	M4
METAL	6 mm	M6
METAL	6.35 mm	M635

\* FLAT dimensions "F" and "ℓ" to be determined by customer.

### KC Type Knurled (18 teeth)



MATERIAL	DIAMETER ( D )	CODE
METAL	6 mm	M6

L	10	15	20	25	30	35	40
A	2.2	6	10	12	12	12	12
B	0.5	1	2	2	4	4	4