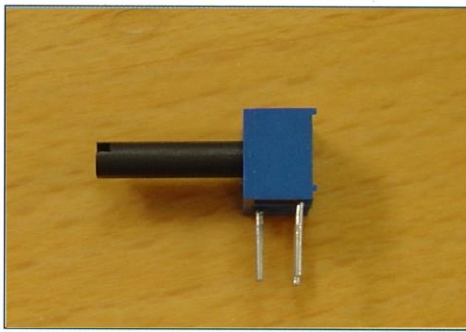
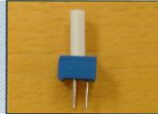


- Single-Turn / Cermet / Industrial / Sealed
- Top and side adjust types (P,U, W,S most popular)



CE7ST Series Square Trimming Potentiometer



Electrical Characteristics

Standard Resistance Range
..... 100 to 2 megohms
(see standard resistance table)

Resistance Tolerance
..... $\pm 10\%$ std.
(tighter tolerance available)

Absolute Minimum Resistance
..... 1% or 2 ohms max.
(whichever is greater)

Contact Resistance Variation
..... 3% or 3 ohms max.
(whichever is greater)

Adjustability
..... Voltage $\pm 0.05\%$
..... Resistance $\pm 0.15\%$

Resolution
..... Infinite

Insulation Resistance
..... 500 Vdc 1,000 megohms min.

Dielectric Strength
..... 101.3 kPa 500 Vac 8.5 kPa 315 Vac

Adjustment Angle
..... 210° nom.

Environmental Characteristics

Power Rating (250 volts max.)
..... 0.5 watt (70°C) , 0 watt (125°C)

Temperature Range
..... -55°C to +125°C

Temperature Coefficient
..... $\pm 100\text{ppm}/^\circ\text{C}$

Vibration (10 to 2,000 Hz)
..... 98 m/s^2
(1% Δ TR; 2% Δ VR)

Shock
..... 390 m/s^2
(1% Δ TR; 2% Δ VR)

Load Life
..... 1,000 hours 0.5 watt @ 70°C
(3% Δ TR; 4% or 4 ohms,
Whichever is greater, CRV)

Rotational Life
..... 200 cycles
(3% Δ TR; 4% or 4 ohms,
Whichever is greater, CRV)

Physical Characteristics

Mechanical Angle
..... 250° nom.

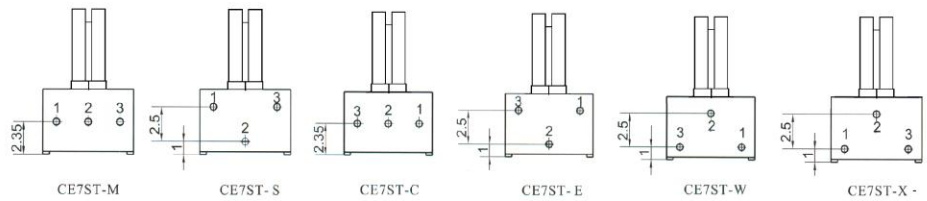
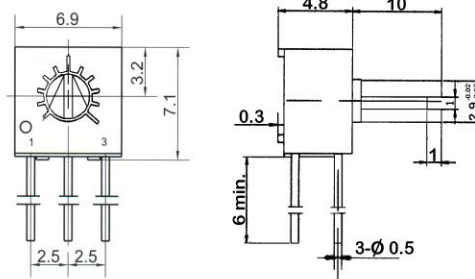
Torque
..... 20 mN • m max.

Stop Strength
..... 50 mN • m min.

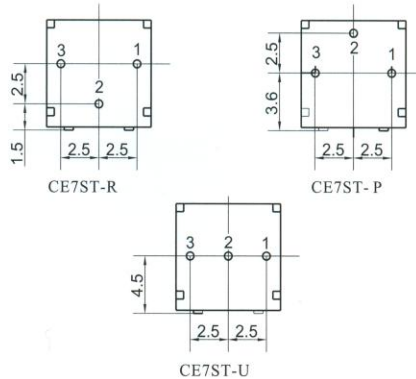
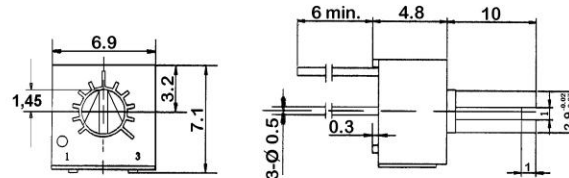
Terminals
..... Solderable pins

Standard Packaging
..... 50 pcs. per tube

Common Dimensions Side Adjust



Common Dimensions Top Adjust



Standard Resistance Table

Resistance (Ohms)	Resistance Code
100	101
200	201
500	501
1,000	102
2,000	202
5,000	502
10,000	103
20,000	203
25,000	253
50,000	503
100,000	104
200,000	204
250,000	254
500,000	504
1,000,000	105
2,000,000	205

Special resistance available

Detail Specification: Q/R Y260-2000

How to order

CE7ST-P-102-K-WT-2910

Model Style Resistance Code with Shaft Adjustment 10% Tol.(std.)

2910 Shaft