

- Single-Turn / Cermet
- Top and side adjust types

CE6STM Series Round Trimming Potentiometer



Electrical Characteristics

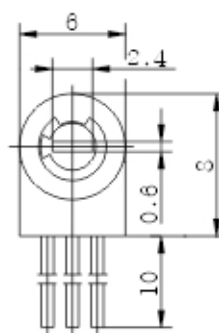
Standard Resistance Range 47 to 2 megohms (see standard resistance table)
Resistance Tolerance $\pm 10\%$, $\pm 20\%$ std. (Tighter tolerance available)
Absolute Minimum Resistance 1% or 2 ohms max. (whichever is greater)
Contact Resistance Variation 5% or 5 ohms max. (whichever is greater)
Insulation Resistance 500 Vdc 1,000 megohms min.
Dielectric Strength 101.3 kPa 300 Vac 8.5 kPa 200 Vac
Effective electrical travel 210° nom

Environmental Characteristics

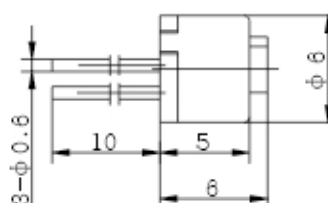
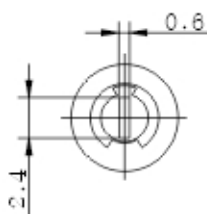
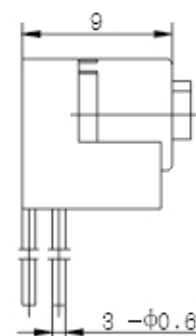
Power Rating (200 volts max.) 0.5 watt (70 $^\circ$ C) , 0 watt (125 $^\circ$ C)
Temperature Range -55 $^\circ$ C to +125 $^\circ$ C
Temperature Coefficient ± 100 ppm/ $^\circ$ C
Vibration (10 to 2,000Hz) 98 m/s ² (2% Δ TR; 3% Δ VR)
Shock 390 m/s ² (2% Δ TR)
Load Life 1,000 hours 0.5 watt @ 70 $^\circ$ C (5% Δ TR; 7% or 7 ohms, Whichever is greater , CRV)
Rotational Life 200 cycles (5% Δ TR; 7% or 7 ohms, Whichever is greater , CRV)

Physical Characteristics

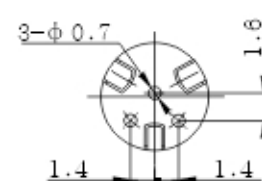
Mechanical Angle 220° nom
Torque 30 mN \cdot mm max.
Stop Strength 40 mN \cdot mm min.



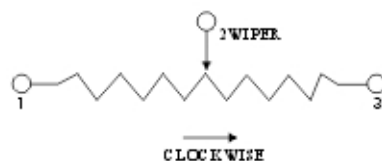
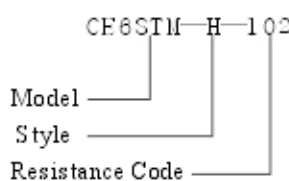
CE6STM-H



CE6STM-V



How to order



Standard Resistance Table

Resistance (Ohms)	Resistance Code
100	101
200	201
500	501
1,000	102
2,000	202
5,000	502
10,000	103
20,000	203
25,000	253
50,000	503
100,000	104
200,000	204
250,000	254
500,000	504
1,000,000	105

Special resistance available

Detail Specification: Q/RYS13-2003