

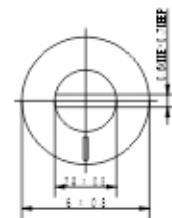
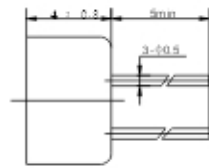
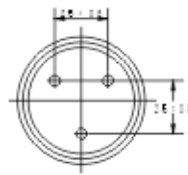
- Single Turn / Cermet / Sealed
- Top and side adjust types

CE6STLP Series Round Trimming Potentiometer

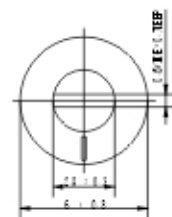
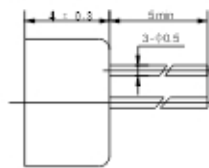
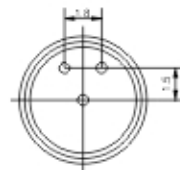


Electrical Characteristics

- Standard Resistance Range**
.....100 to 1 megohm
(see standard resistance table)
- Resistance Tolerance**
..... $\pm 20\%$ or $\pm 10\%$
- Absolute Minimum Resistance**
.....2% or 2 ohms max.
(whichever is greater)
- Contact Resistance Variation**
..... 3% or 10 ohms max.
(whichever is greater)
- Adjustability**
... Voltage $\pm 0.05\%$ Resistance $\pm 0.15\%$
- Resolution**
..... Infinite
- Insulation Resistance**
..... 500 Vdc 1,000 megohms min.
- Dielectric Strength**
..... 101.3kPa 500 Vac 8.5kPa 350 Vac
- Adjustment Angle**
..... 210° nom.



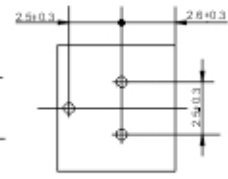
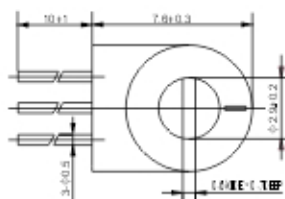
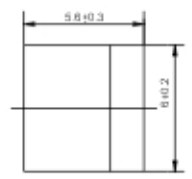
CE6STLP-H



CE6STLP-HA

Environmental Characteristics

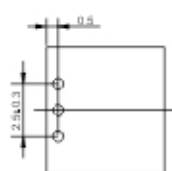
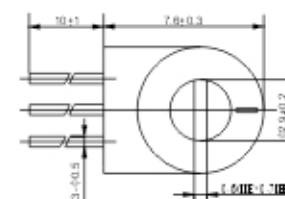
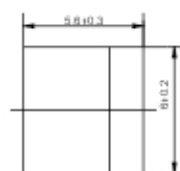
- Power Rating (200 volts max.)**
.....0.5 watt (70°C), 0 watt (125°C)
- Temperature Range**
.....-55°C to +125°C
- Temperature Coefficient**
..... ± 100 ppm/°C
- Humidity**
... GJB360 A-96, Method 106, 240 hours
(5% Δ TR, 100 megohms IR)
- Shock**
... GJB360 A-96, Method 213, Condition I
(2% Δ TR, 2% Δ VR)
- Random Vibration**
... GJB360 A-96, Method 214, Condition I, E
(2% Δ TR, 2% Δ VR)
- Load life**
..... GJB360 A-96, Method 108, 70°C,
0.5 watt, 1000 hours (5% Δ TR;
4% or 4 ohms, whichever is greater,
CRV)
- Rotational Life**
.....200 cycles (5% Δ TR; 4% or 4 ohms,
Whichever is greater, CRV)



CE6STLP-S

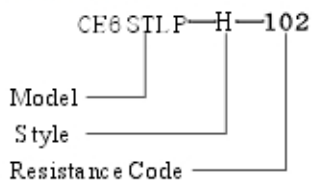
Physical Characteristics

- Mechanical Angle**
..... 260° nom.
- Torque**
..... 10 mN · mm max.
- Stop Strength**
..... 25 mN · mm min.



CE6STLP-SA

How to order



Special resistance available

Detail Specification: Q/R Y20019—2000