

6mm carbon potentiometers with plastic housing and protection type IP 5 (dust-proof).

CA6 potentiometers are available both in through-hole and in SMD terminal configuration. The substrate in our SMD potentiometers is high temperature resistant, for reflow soldering.

Tapers available include linear, log and antilog, even for SMD potentiometers. **Vimex** can also study special requests.

Terminals are manufactured in tinned brass to guarantee better soldering and higher resistance to corrosion. They can be provided straight or crimped (with "snap in"), which is recommended to hold the potentiometer to the board prior to the soldering operation.

Thumbwheels and shafts can be provided either separately or already inserted in the potentiometer. CA6VSMD potentiometers, with or without thumbwheel, can be requested in Bulk or Tape & Reel (T&R) packaging.

Vimex potentiometers can be adjusted from either side, both in the horizontal and the vertical adjustment types. There is a guide on the housing to simplify the manual adjusting operations.

Our potentiometers can be manufactured in a wide range of possibilities regarding:

- Resistance value.
- Tolerance.
- Tapers / variation laws of the resistive element (linear, log, antilog).
- Others on request.
- Pitch.
- Positioning of the wiper (the standard is at 50%).
- Housing and rotor color.
- Mechanical life.
- Self-extinguishable plastic parts according to UL 94 V-0.

Applications

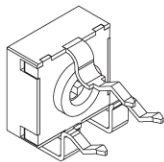
- Small electronic appliances.
- Measurement and test equipment.
- Automotive: alarms, switches
- Telecommunication equipment (antenna amplifiers and receivers, videocomm., intercomm.)
- Alarm systems.

Models

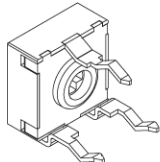
All models shown here have the standard rotor for the 6mm series, the cross (X). Models can be manufactured with any of the rotors listed on the rotor menu. The color of the housing or rotor can also be modified.



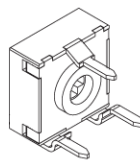
CA6 H2,5



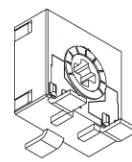
CA6 V 2,5



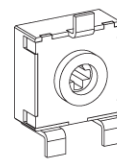
CA6 V5



CA6 VS5



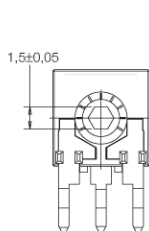
CA6 HSMD



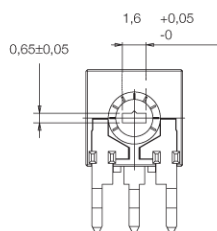
CA6 VSMD

Rotors

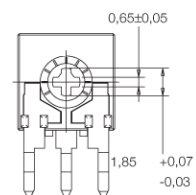
The rotor by default is the cross (X). Accessories are designed for the X rotor.



M



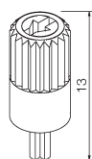
N



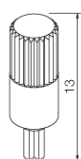
X

Shafts

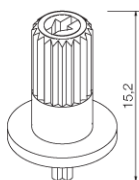
Shafts are offered in different colors. On request, they can also be provided in accordance with UL 94 V-0. Potentiometers can be supplied with shafts already inserted in. Vimex can also study special shafts.



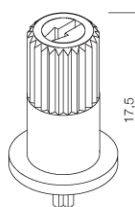
6022



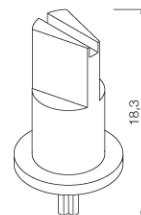
6023



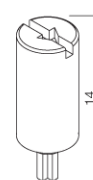
6024



6025



6028



6031

Thumbwheels

Thumbwheels are offered in different colors. On request, they can also be provided in accordance with UL 94 V-0. Potentiometers can be supplied with thumbwheels already inserted in. Vimex can also study special shafts.



6001



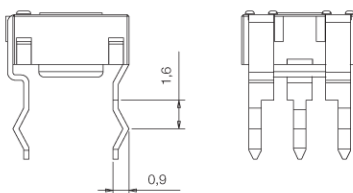
6030



6032

Terminals

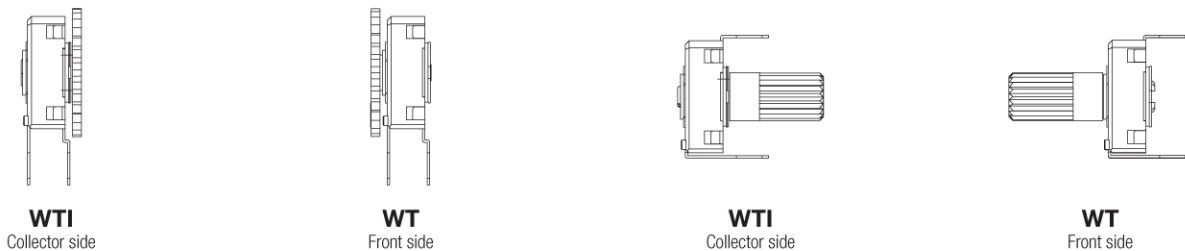
In the CA6 family, Vimex will always recommend terminals with "snap in" in order to better hold the component to the board prior to soldering. (Not available for CA6VS5 model).



SNP

Adjustment possibilities

Vimex potentiometers can be adjusted through either the front side (WT) or the collector side (WTI):

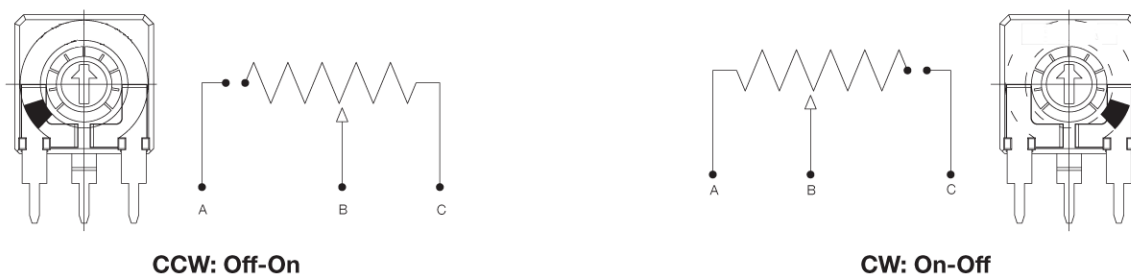


Potentiometers with cut track

The resistive element in this potentiometer has an area with very high resistive values, resulting in an open circuit. Recommended for lighting regulation.

With cut at the beginning of the track CCW: Off-On.

With cut at the end of track- CW: On-Off. Others positions available on request.



Packaging

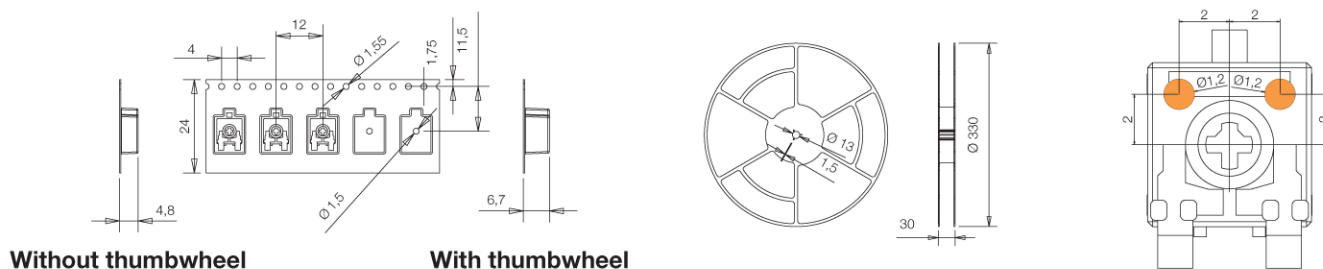
Bulk packaging: Potentiometers are first bagged and then introduced in boxes:

Potentiometer model	+ Shaft or thumbwheel inserted	Pieces per box (130 x 60 x 90)
H2,5 - V2,5 - V5 - VS5 - HSMD - VSMD	- (only potentiometers)	1000
	6001, 6030, 6032	1000
	6022, 6023, 6024, 6031	500
	6025, 6028	300

Tape and reel (T&R) packaging:

Potentiometer model	+ Shaft or thumbwheel reference	Pieces per reel
VSMD	- (only potentiometers)	1200
	6030	750

Dimensions: Reel Ø: 330mm, Tape width: 24mm



Electric Specifications

These are standard features; other specifications can always be studied on request.

	Through-Hole	SMD
Range of resistance values Lin (A) Log (B) Antilog (C)	100Ω ... 5MΩ 1 KΩ ... 2,2 MΩ	100Ω - 1MΩ 1KΩ - 1MΩ
Tolerance Special tolerances available on request	100Ω ... 1MΩ ±20% >1MΩ ... 5MΩ ±30% Out of range: Rn> 5MΩ: +50% -30%	< 1MΩ ± 25%
Variation laws	Lin (A), Log (B), Antilog (C) Other tapers available on request	
Residual resistance	Lin (A), Log (B), Antilog (C) ≤ 5*10 ⁻³ *Rn Minimum value 2Ω	
CRV - Contact Resistance Variation (dynamic)	≤3%Rn	
CRV - Contact Resistance Variation (static)	≤5%Rn	
Maximum power dissipation at 40° C. Lin (A) No Lin (B, C)	0,10W 0,06W	
Maximum voltage at 40°C Lin (A) No Lin (B, C)	100 VDC 60VDC	
Operating temperature	-25°C ... +70°C	
Temperature coefficient	100Ω - 10KΩ → +200/ -300 ppm. >10KΩ - 5MΩ → +200/ -500 ppm	100Ω - 100KΩ → +200/ -500 ppm. >100KΩ - 1MΩ → +200/ -1000 ppm.

Mechanical Specifications

	Through-Hole and SMD
Resistive element	Carbon technology
Angle of rotation (mechanical)	235° ± 10°
Wiper position	Middle position: 50% ± 15°
Angle of rotation (electrical)	215° ± 20°
Max. stop torque	4 Ncm
Max. push/pull on rotor	9,8 N
Wiper torque	< 2 Ncm
Mechanical life	1000 cycles (more available on request)

Test

Test // Conditions // Typical variation of Nominal Resistance

Damp heat // 500 h. at 40°C and 95% RH // +5%; -2%

Thermal cycles // 16h at 85°C, plus 2h at -25°C // ±2,5%

Load life // 1.000 h. at 40°C // +0%; -5%

Mechanical life // 1000 cycles at 10 c.p.m. and at 23°C ± 2°C // ±3%

Soldering effect // 2 seconds at 350°C // ±1%

Storage (3 years) // at 23°C ± 2°C // ±3%

For further information on tests, go to TESTS AND RELIABILITY, on pages 10-11

EXAMPLE: CA6XV2,5-10KA2020 SNP PI WT6030-BA-V0

Standard features

Series	Rotor	Model	Packg	Ohm value	Taper	Tol	Life
1	2	3	4	5	6	7	8
CA6	X	V2,5		-10K	A	2020	

Extra features

Track	Terminals	Housing	Rotor	Wiper position
9	10	11	12	13
	SNP			PI

Assembled accessory

Assembly	Ref #	Color	Flam.
	14		15
WT	6030	-BA	-V0

Standard configuration

Dimensions:	6mm
Protection:	IP 5 (dust proof)
Resistance:	Carbon technology
Color:	Blue housing with white rotor
Packaging:	Bulk
Wiper position:	at 50% \pm 15°
Terminals:	Snap in P strongly recommended
Marking:	Resistive value marked on housing; others on request.

Customized products

A drawing is requested to order a customized product. The code assigned will include all special specifications.

Series, rotor, model and total resistive value are given before the special code: CA6XV5-10K CODE C00111

1 - Series

CA6

3 - Model and pitch

H2,5	V2,5	V5	VS5	HSMD	VSMD
------	------	----	-----	------	------

5 - Resistance value

Through-hole			SMD	
Taper:	Lin (A)	Log (B), Antilog (C)	Lin (A)	Log (B), Antilog (C)
Value Rn	100 Ω / 100 ... / ... 5 M Ω / 5M	1K Ω / 1K ... / ... 2,2 M Ω / 2M2	100 Ω / 100 ... / ... 1 M Ω / 1 M Ω	1K Ω / 1K ... / ... 1 M Ω / 1M

Other resistive values available on request.

7 - Tolerance

Through-hole models		SMD models	
100 Ω \leq Rn \leq 1M Ω : \pm 20%	2020		
1 M Ω \leq Rn \leq 5M Ω : \pm 30%	3030		
For Rn > 5M Ω , tol : +50% - 30%	5030	2525	
Special tolerances available: <5% ... 10%, etc.			

9 - Cut track

At beginning of track, CCW: Off - On	PCI
At end of track, CW: On - Off	PCF

11 - Housing color

Standard is blue	(leave blank)
With other colors -See color chart below-, for example, red	CJ-color; ex: CJ-RO

2 - Rotors

X (Standard)	M	N
--------------	---	---

4 - Packaging

	Through-hole	SMD models
Bulk -standard-	(blank)...	(blank)...
T&R (Tape and reel)	(N.A.) ⁽¹⁾	-T&R

(1) N.A. - Not Available: Tape and Reel packaging is only available for VSMD model.

6 - Resistance law / taper

Lin - Linear	A
Log - Logarithmic	B
Antilog - Antilogarithmic	C
- Special tapers have codes assigned:	CODE YXXXXX

Please, indicate terminal position when ordering a special taper.

8 - Operating life (cycles)

Standard (1000cycles)	(leave blank)
Long life: LV + the number of cycles. ex: LV06 for 6000 cycles ⁽¹⁾	LVXX: ex: LV06

(1) Others on request.

10 - Terminals (Crimped terminals or snap in:)

Without SNAP IN-	(leave blank)
With SNAP IN P	SNP

12 - Rotor color

Standard is white	(leave blank)
With other colors -See color chart below-, for example, red	RT-color; ex: RT-RO

13 - Wiper position

(Standard: at 50% \pm 15°)	(leave blank)
Initial or CCW	PI
Final or CW	PF

15 - Flammability (according to UL 94 V-0)

Not self-extinguishable	(leave blank)
Self-extinguishable (including all plastic parts of the potentiometers: rotor, housing and accessory. If only one part needs to be V0, please, inform)	-V0

For ordering spare accessories

Accessory reference - color- flammability. Ex. 6030-BA-V0 is a white self-extinguishable 6030 thumbwheel

XXXX-YY-__

Color chart for rotor, housing and accessories

Black ⁽¹⁾	NE
White	BA
Neutral	IN
Transparent	TA
Red	RO
Green	VE
Yellow	AM
Blue	AZ
Grey	GS
Brown	MR

(1) Black is not available for housings.

14 - Potentiometers with assembled accessories

Assembled from front side	WT
Assembled from collector side	WTI
Accessory Reference See list of shafts and thumbwheels available	XXXX Example: 6030
Color of shaft or thumbwheel	-YY Example, white: -BA

DRAWINGS CA6

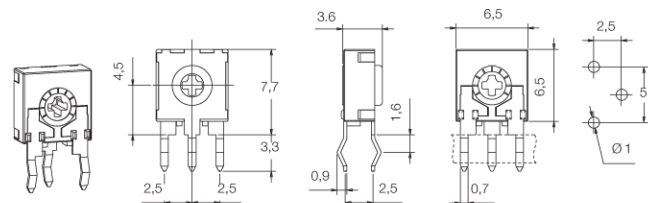


Tolerances 6 mm (in mm.):

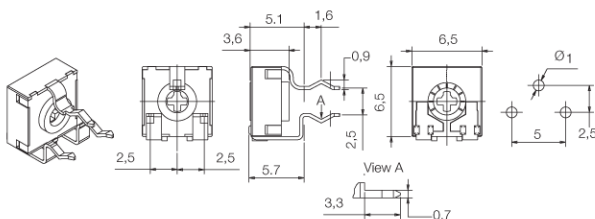
<1	±0,1
1...<5	±0,3
5...	±0,5

Model types. CA6

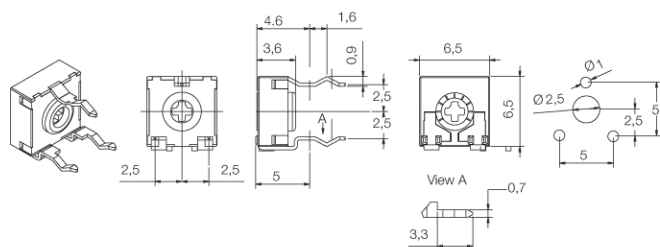
CA6 H2,5



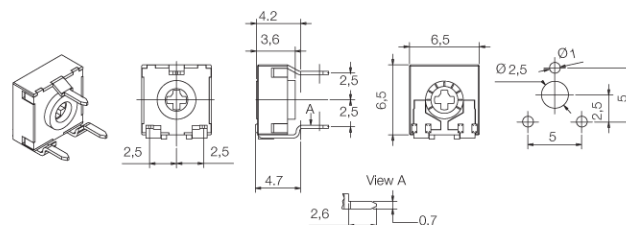
CA6 V2,5



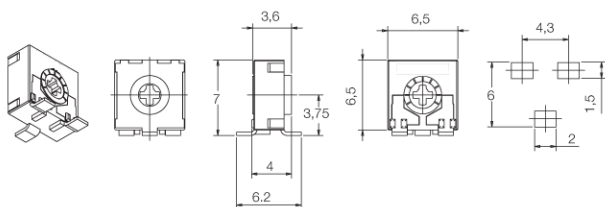
CA6 V5



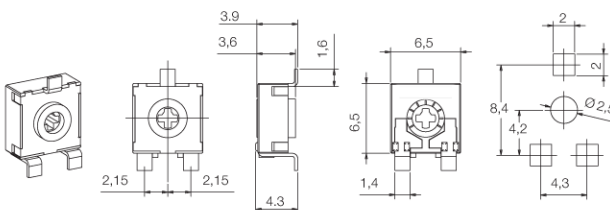
CA6 VS5



CA6 HSMD

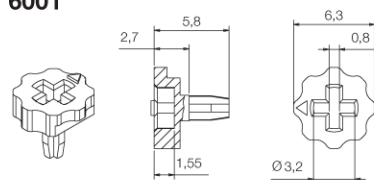


CA6 VSMD

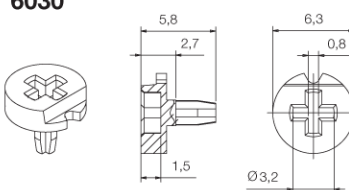


Thumbwheels CA6

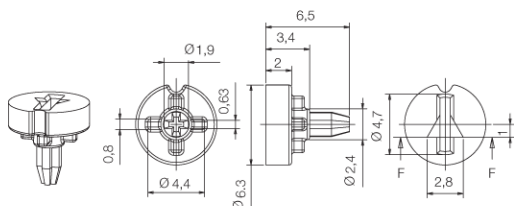
6001



6030



6032



Specifications on this catalogue are for reference only; they are subject to change without notice.

DRAWINGS CA6

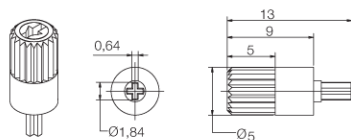


Tolerances 6 mm (in mm.):

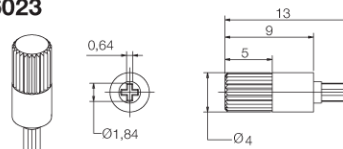
<1	±0,1
1...<5	±0,3
5...	±0,5

Shafts. CA6

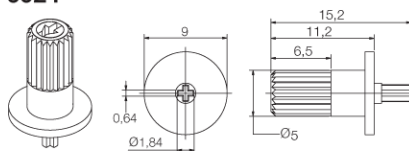
6022



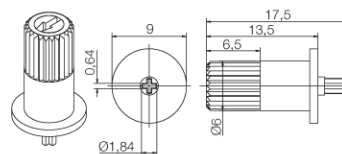
6023



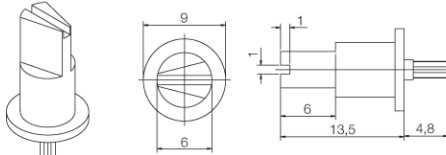
6024



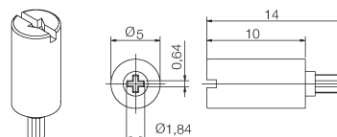
6025



6028



6031



Specifications on this catalogue are for reference only; they are subject to change without notice.