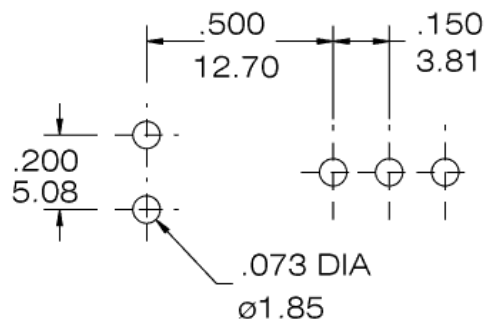
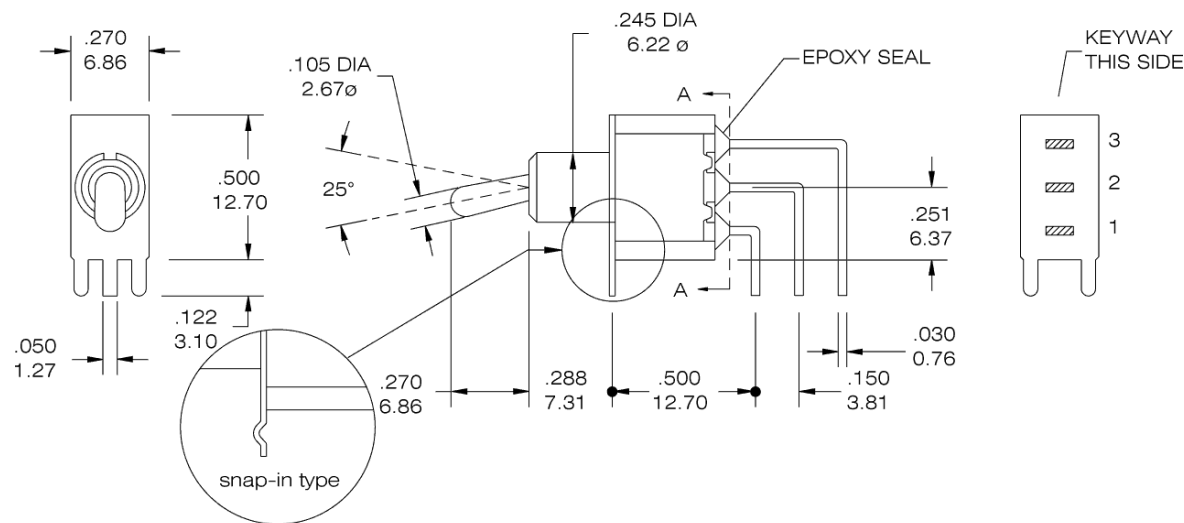




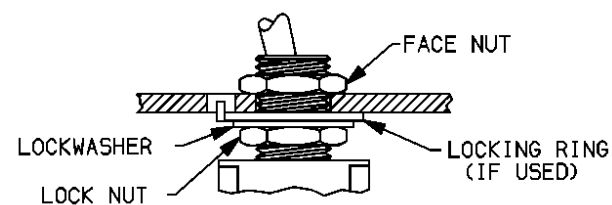
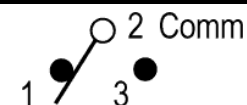
800-227-0075

<http://www.vimex.com>

Product Drawing



PCB Footprint



Typical Assembly with Locking Ring
Locknut should always be used with non-flanged bushing
To prevent damaging panel front, always tighten locknut at the back of the panel.

				Description:	Standard outline drawing.
Page:	1	Date:	2003-12-02	P/N	T8019L
of:	1	Revision:	1.0		