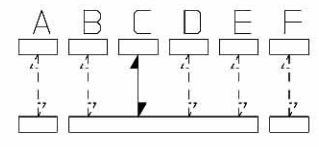
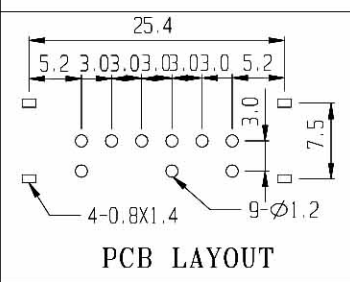


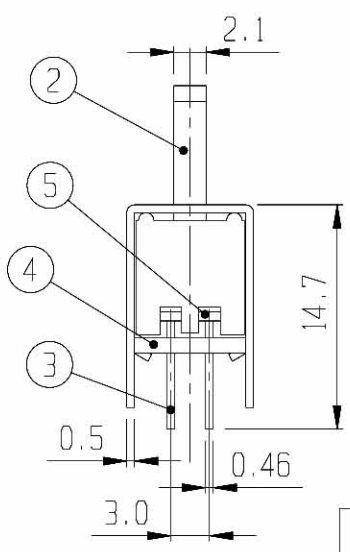
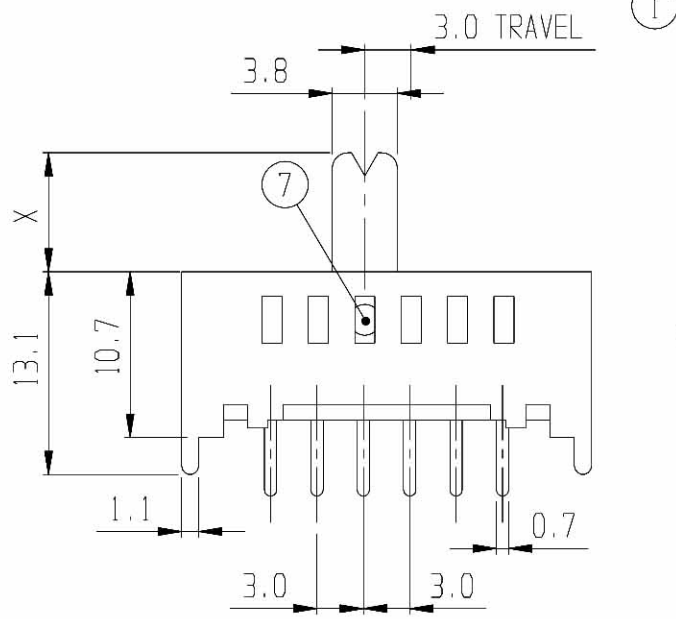
**RoHS Compliance**



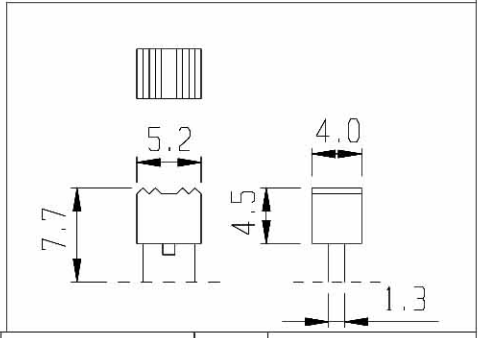
SCHEMATIC



PCB LAYOUT



CAP FOR UG



|    |          |          |     |           |    |               |              |         |
|----|----------|----------|-----|-----------|----|---------------|--------------|---------|
| 7  | BALL     | STEEL    | 2   |           |    |               |              |         |
| 5  | CONTACT  | BRASS    | 1   | Ag PLATED | 6  | SPRING        | STEEL WIRE   | 2       |
| 3  | TERMINAL | BRASS    | 9   | Ag PLATED | 4  | TERMINAL BASE | PHENOL RESIN | 1       |
| 1  | FRAME    | S P C C  | 1   | Ni PLATED | 2  | KNOB          | P O M        | 1       |
| NO | PART     | MATERIAL | QTY | REMARKS   | NO | PART          | MATERIAL     | QTY     |
|    |          |          |     |           |    |               |              | REMARKS |

|        |   |  |  |                            |  |             |  |        |
|--------|---|--|--|----------------------------|--|-------------|--|--------|
| ISSUED | SPECIFICATION                               |  |  | TITLE: SLIDE SWITCH (1P6T) |  |             |  |        |
|        | RATING: DC 30V 0.3A                         |  |  | MODEL NO: SS-16F05         |  |             |  |        |
|        | CONTACT RESISTANCE: 30mΩ max.               |  |  | TOLERANCE                  |  | UNIT: MM    |  | DWN.   |
|        | INSULATION RESISTANCE: 500MΩ at 500V DC     |  |  | UP TO 1.0:±0.1             |  | SCALE: 2:1  |  | CHK'D. |
|        | WITHSTAND VOLTAGE: AC 500V for 1 minute     |  |  | 1.0 TO 10.0:±0.2           |  | VERSION: 01 |  | APPD.  |
|        | OPERATION FORCE: REFER ATTACH SPECIFICATION |  |  | OVER 10.0:±0.3             |  | DRWG NO:    |  |        |
|        | SWITCHING LIFE: 10K cycles min.             |  |  |                            |  |             |  |        |

BY:   
DATE: 28-JAN-1999

