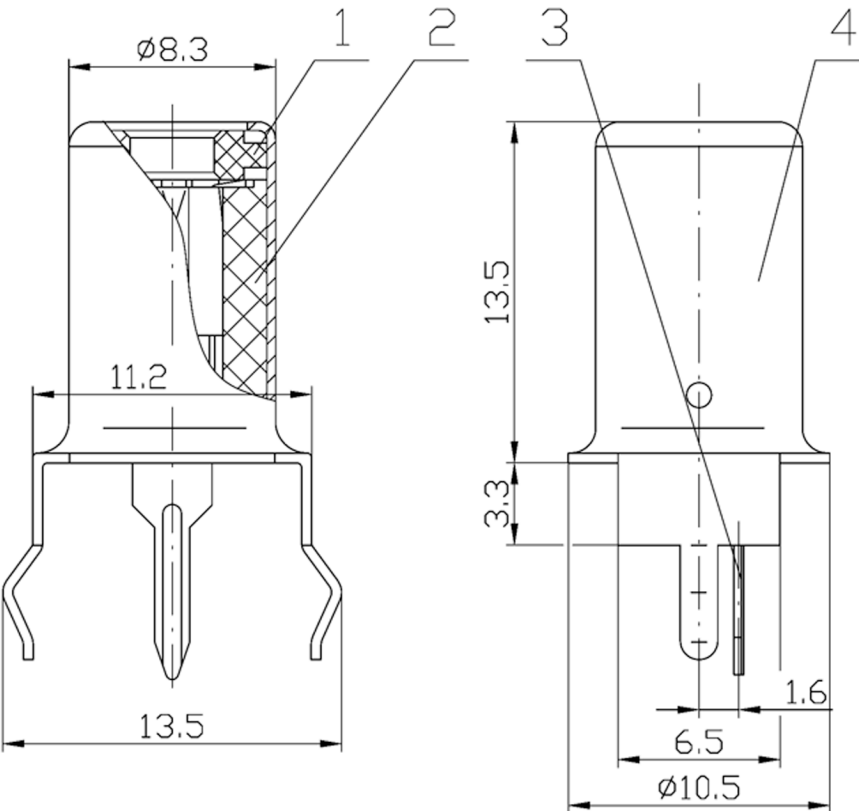
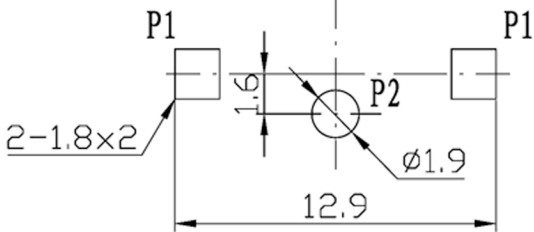


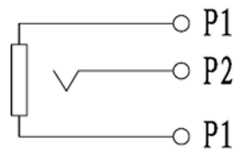
REV.	ECN. NO.	DESCRIPTION	APR.	DATE



DIMENSIONS OF PC BOARD HOLES(COMMENT)
TOP VIEW(T=1.6mm) ⊗



CIRCUIT DIAGRAM



GAUGE PLUG

NOTE:
ELECTRICAL PROPERTIES:
INSULATION RESISTANCE : 100MΩ MIN
DIELECTRIC WITHSTANDING : AC 500V 1MIN
RATING LOAD :DC 12V, 1A
CONTACT RESISTANCE : 30mΩ MAX
MECHANICAL PROPERTIES:
INSERTION FORCE : 3 N~25N
EXTRACTION FORCE : 3 N~25N
DURABILITY : 1000 TIMES
APPLIED ENVIRONMENT:
TEMPERATURE: -40°C ~ 70°C

RoHS Compliant

4	OUTER CONDUCTOR	1	BRASS	CuSn
3	CONTACT NEEDLE	1	BRASS	CuSn
2	INSULATOR	1	PBT	
1	WASHER	1	PBT	SEE PART. NUMBER
ITEM	NAME	Q'TY	MATERIAL	PLATING & COLOR

DIMENSION IN mm		APR. ZSC 2014-2-14		TITLE. AV PIN JACK		
GENERAL TOLERANCES (UNLESS SPECIFIED)						
.X ±0.38	X.' ±3.0'	CHK. CJQ 2014-2-14	PART NO. SCJ-0359-COLOR / PLATING			
.XX ±0.20	.X' ±2.0'					
.XXX ±0.10	.XX' ±1.5'	DRA. LXL 2014-2-14	SIZE.	A4	SHEET	1/1
CUSTOMER			SCALE.	2:1	REV.	X1

