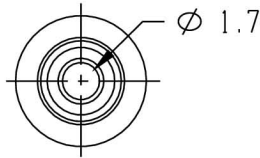
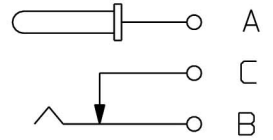
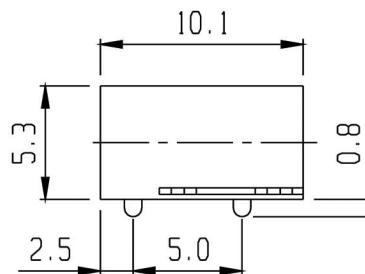
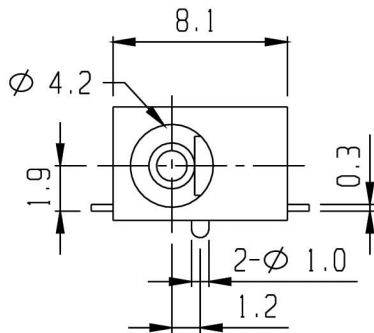
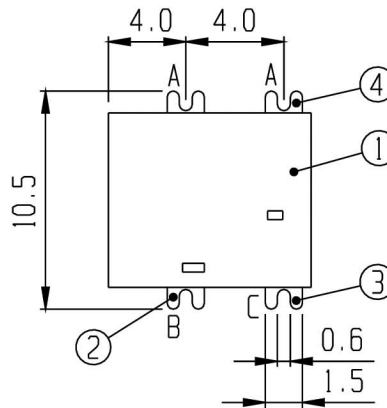


MATING PLUG

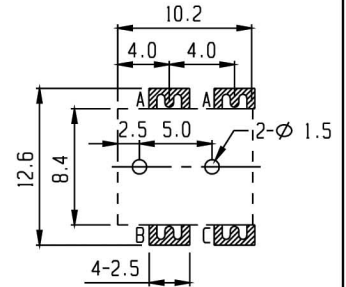


RoHS Compliance

CENTER PIN DIAMETER  
 $\phi 1.6 \pm 0.05 \text{mm}$



SCHEMATIC



PCB LAYOUT

5	CENTER PIN	COPPER ALLOY	1	Ni PLATED					
3	CONTACT	BRASS	1	Ag PLATED	4	TERMINAL	BRASS	1	Ag PLATED
1	FRAME	NYLON	1	BLACK	2	SPRING PLATE	CuBe	1	Ag PLATED
NO.	PART	MATERIAL	QTY	REMARKS	NO.	PART	MATERIAL	QTY	REMARKS

ISSUED

SPECIFICATION

TITLE: DC POWER JACK SMD

RATING: DC 30V 0.3A

CONTACT RESISTANCE: 50mΩ max.

INSULATION RESISTANCE: 100MΩ AT 500V DC

WITHSTAND VOLTAGE: AC 500V for 1 minute

OPERATION FORCE: REFER ATTACH SPECIFICATION

SWITCHING LIFE: 5K cycles min

MODEL NO: SCJ-928-SMD

TOLERANCE

UNIT: MM

DWN.

*hro*

UP TO 1.0:±0.1

SCALE: 3:1

CHK'D.

*hm*

1.0 TO 10.0:±0.2

VERSION: 04

APPD.

*[Signature]*

OVER 10.0:±0.3

DRWG NO: 001

BY: *[Signature]*

DATE: 26-JUN-2007

**VIMEX**  
INTERNATIONAL CORPORATION

