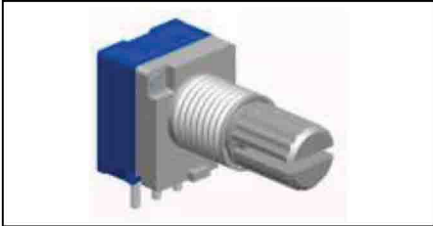


9mm Metal Shaft Rotary Potentiometer

V9M-N X1



Part Number

V9M-N X1 - B 50K , L- 20 KC / N=5

Taper

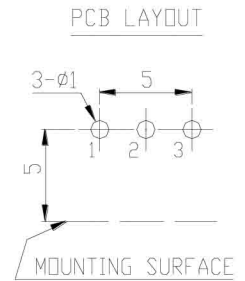
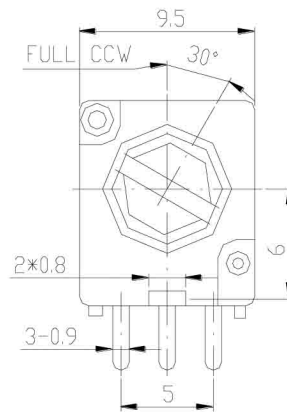
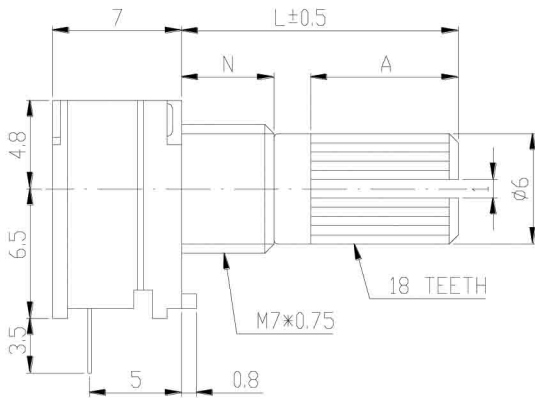
Shaft Length

Bush Length

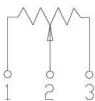
Resistance value

Shaft Type

Dimensions

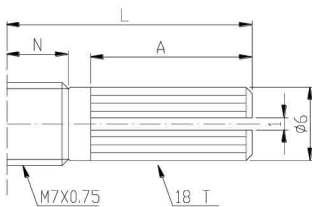


CIRCUIT



Shaft Type

KC Type



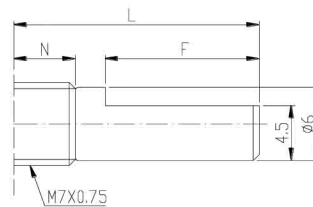
N=5mm

L	10KC	12.5KC	15KC	20KC
A	4	7	7	12

N=7mm

L	15KC	20KC	25KC
A	7	12	12

F Type



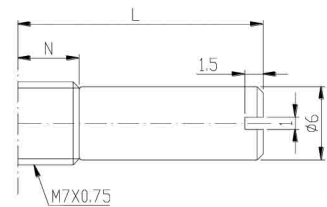
N=5mm

L	15F	20F
F	7	12

N=7mm

L	15F	20F	25F
F	7	12	12

RE Type



N=5mm

L	8RE	10RE	15RE
---	-----	------	------

N=7mm

L	15RE
---	------