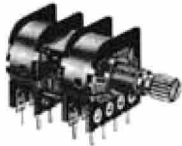


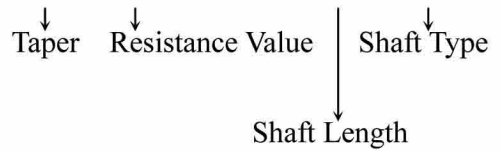
# 16mm Multiple Units Rotary Potentiometer – With Tap

## MU164T

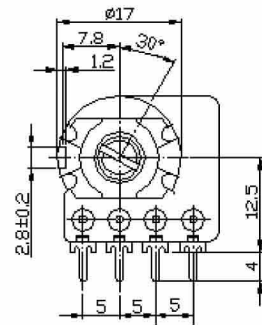
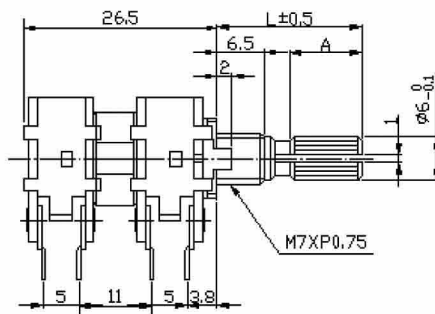


### Part Number

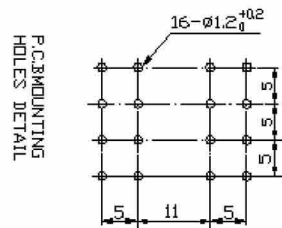
MU164T - **B** **50K**, L - **20** **KC**



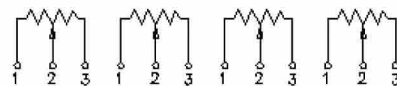
### Dimensions



SHAFT SHOWN IN FULL C.C.W. POSITION

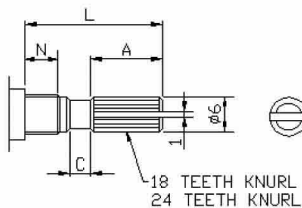


### CIRCUIT

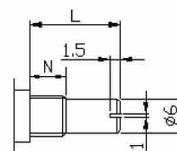


### Shaft Type

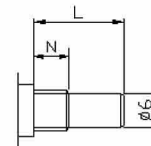
#### KC TYPE



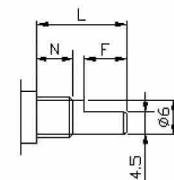
#### RE TYPE



#### R TYPE



#### F TYPE



N:5m/m

SHAFT-TYPE	L	10	15	20	25	30	35	40
KC	A	3.2	6	10	12	12	12	12
	C	0.5	1	2	2	4	4	4
F	F	4	7	12	12	12	12	12
R,RE	L	10	15	20	25	30	35	40

N:6.5m/m

SHAFT-TYPE	L	10	15	20	25	30	35	40
KC	A	2.2	6	10	12	12	12	12
	C	0.5	1	2	2	4	4	4
F	F	2.5	7	12	12	12	12	12
R,RE	L	10	15	20	25	30	35	40